



**VILARA'S**  
**LEGACY**

Your Beautiful Home. Your Legacy.

2 & 3 BHK FLATS IN SARJAPURA, S MEDAHALLI

# WHY VILARA'S LEGACY?

Because Home is More than Just Four Walls.



**DISCOVER TRUE HOMECOMING:** At Vilara's Legacy, every moment is curated to feel like a soulful reunion with home. Our commitment? To redefine the very essence of luxury living.

**BEYOND PHYSICALITY:** We recognize that a house is more than bricks and mortar. It's a sanctuary of memories, aspirations, and deep emotional ties. At Vilara's Legacy, we're not just constructing buildings but crafting spaces where every heartbeat feels connected.

**A MASTERPIECE OF DESIGN:** Step in, and a world of opulence welcomes you. Our entrance isn't merely a gateway but an introduction to the ethos of belonging and community that Vilara's Legacy champions. Every apartment, meticulously designed, marries modern comforts with classic elegance, making it more than just a living space - it's a statement.

**A RESPITE IN THE HEART OF THE CITY:** Each home is crafted to be your personal retreat, where the cacophony of the outside world dims, allowing moments of relaxation and rejuvenation to take center stage.

**MORE THAN A RESIDENCE:** Vilara's Legacy isn't just about providing shelter. It's about offering an experience, a lifestyle. It's where dreams find their address, aspirations turn tangible, and an unparalleled luxurious life is an everyday affair.

## CHOOSE VILARA'S LEGACY.

Choose a lifetime of coming home.



# TRANSFORM YOUR LIVING EXPERIENCE with Our Elite Amenities.



## CHILDREN'S PLAY AREA: Where Imagination Takes Flight

Designed for safety and fun, our dedicated play space lets our youngest residents explore and play.



## PARTY HALL: Celebrate in Style

For all your special moments, from birthdays to anniversaries, our spacious party hall is ready to accommodate and elevate your celebrations.



## GATED COMMUNITY: Safety and Serenity Combined

Our development is a gated community, which means that only authorized individuals are allowed to enter the premises. This adds an extra layer of security and privacy for our residents.



## CCTV SURVEILLANCE: Eyes That Never Blink for Your Safety

Our commitment to resident well-being shines through our advanced CCTV coverage in all common areas, ensuring proactive monitoring and enhanced security at all times.



## INTERCOM FACILITY: Instant Connections for Peace of Mind

Every flat is equipped with an intercom, bridging quick communication between residents and our security team. Whether it's an urgent need or simple assistance, help is just a call away.



## ROUND-THE-CLOCK SECURITY: Vigilance Meets Peace of Mind

At our development, your safety is paramount. A dedicated team of professional security personnel stands guard 24/7, patrolling the premises and ensuring a secure environment.



## GYM: Sculpt Your Fitness Journey

Our project features a state-of-the-art gym equipped with modern fitness equipment. This facility is perfect for fitness enthusiasts who wish to stay healthy and active.

### Key highlights

- STRRPA approved
- CC & OC project
- No common walls
- RERA approved
- 24 Hours power backup
- CCTV Surveillance
- Intercom Facility
- 24x7 Security

# VILARA'S LEGACY: Luxury Meets Location in Bangalore

## LOCATION & DETAILS:

Nestled in Bangalore's heart, Vilara's Legacy graces S Medahalli Village, Sarjapura Hobli, Anekal Taluk with its presence at survey numbers 22/5 and 22/6, with a postal code of 562125, this luxurious haven sprawls over 1 acre 5 guntas.

## CERTIFICATIONS:

The project proudly boasts an approval from STRRPA (Satellite Town Ring Road Planning Authority) under the reference STRRPA/TP/CC/273/22-23 and adheres to RERA standards, ensuring transparency and credibility.

## MODERN LIVING:

Comprising 70 exquisite flats, residents can choose between spacious 2BHK and 3BHK units. Contemporary architecture takes the spotlight, and the emphasis on no common walls ensures every resident their private haven. Premium fixtures and fittings elevate the elegance of each unit, offering a sophisticated lifestyle.

## STRATEGIC CONNECTIVITY:

Vilara's Legacy isn't just about internal grandeur but also boasts an unbeatable location. Proximity to commercial hotspots, premier educational institutions, top-tier hospitals, and vibrant entertainment zones make daily life seamless. Amidst the city's hustle and bustle, Vilara's Legacy promises a verdant and tranquil environment, an oasis perfect for the modern family.



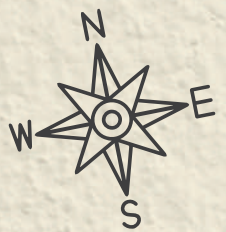
SARJAPURA CIRCLE

ATTIBELE

STRR Road - 328ft

STRR Road - 328ft

# Ground Floor



Dive into a **LIFE WHERE LUXURY**  
 Finds its true meaning at **VILARA'S LEGACY**



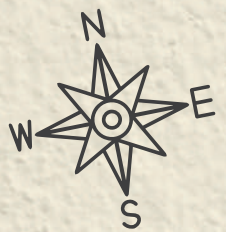
SARJAPURA CIRCLE

ATTIBELE

STRR Road - 328ft

STRR Road - 328ft

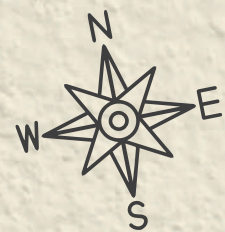
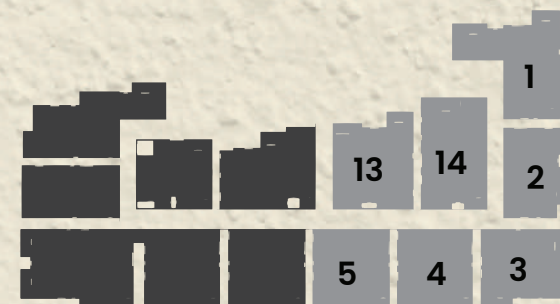
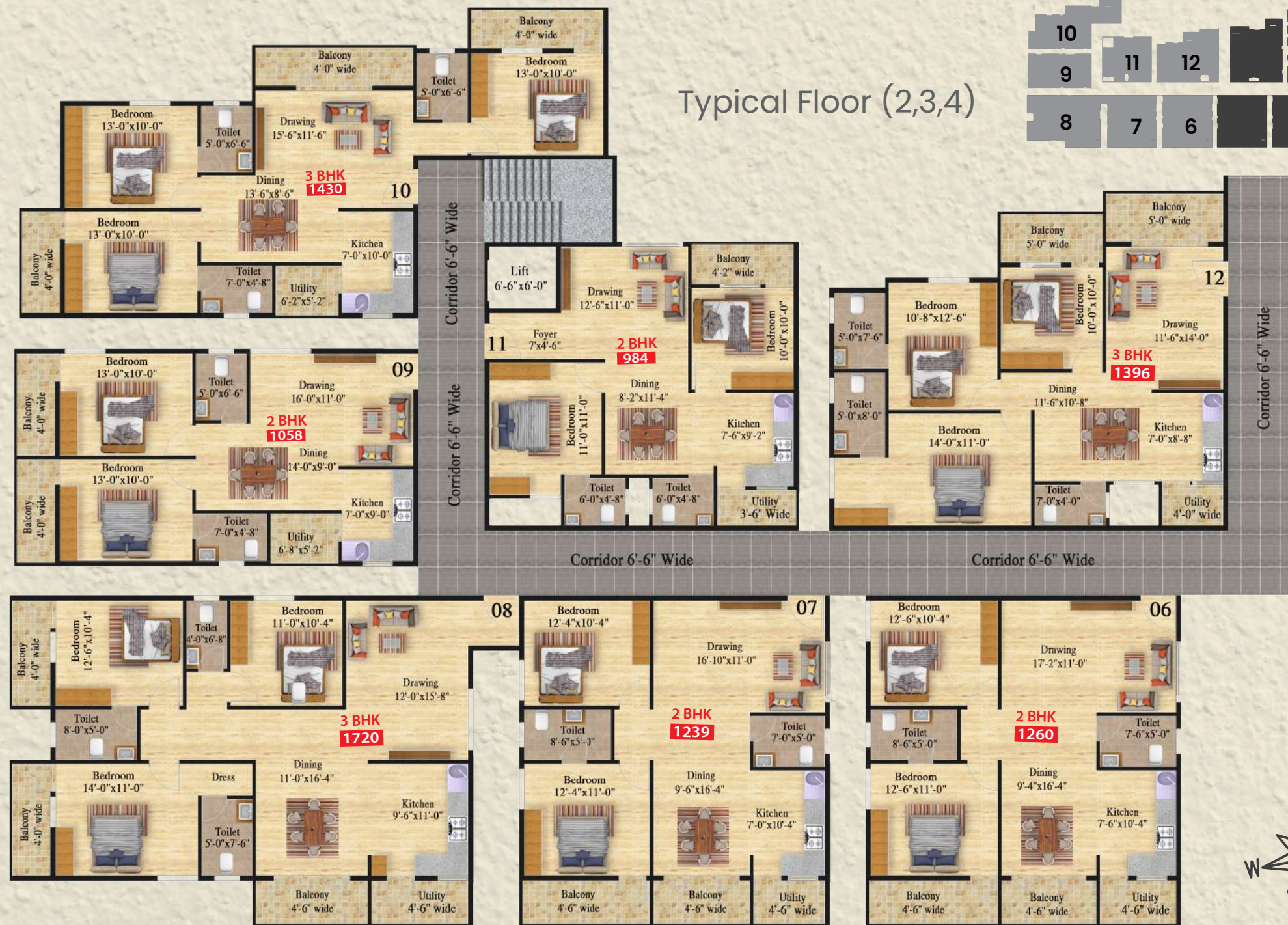
First Floor



Unmatched IN QUALITY,  
Peerless IN DESIGN...

Discover the apartment where  
DREAMS TAKE FORM.





# DISCOVER YOUR DREAM HOME

with our meticulously rafted and thoughtfully designed apartments

## Specifications



### STRUCTURE:

The building will have an R.C.C. framed structure with solid cement blocks, with 6" external and 4" internal walls.



### PLASTERING:

The internal and external walls will have well-finished plastering throughout.



### PAINTING:

Emulsion paint will be used for the internal walls, weather proof paint will be used for the external walls.



### FLOORING:

The living, dining, bedrooms, and kitchen will have vitrified tile flooring. Ceramic tile flooring will be used for balconies and utility areas, with 3 feet ceramic tile dado for the utility area. Anti-skid ceramic tiles will be used in all toilets, while the lift lobby and corridor will have vitrified/Granite flooring.



### PLUMBING & SANITARY FIXTURES:

Ivory/white pastel-coloured EWC hand wash basins of Bath sense/Parry ware or Jaquar/Ess or equivalent make of bathroom fixtures will be used in all toilets.



### KITCHEN:

The kitchen will have a polished granite platform with a stainless steel sink. A provision for water inlet near the kitchen sinks will be provided for a water purifier. Premium quality ceramic tile dadoing up to 2 feet above the kitchen platform will be provided.



### HARDWARE:

Quality locks will be used for the main doors & bedrooms.



### ELECTRICAL WIRING:

The wiring used will be of Anchor, Great White, or a similar quality brand.



### SWITCHES:

All switches shall be of Anchor/Great White or equivalent.



### CONNECTED POWER:

The connected power will be 3 KVA for 2 BHK and 4 KVA for 3 BHK ELCB/MCB by Legrand/Indo kappa or equivalent.



### DOOR & WINDOWS:

The main door will have a teak wood door frame with an HDF moulded panelled shutter. The bedrooms will have a hardwood door frame with an HDF moulded panelled shutter. The sliding doors and windows will be made of aluminium or UPVC. The toilets will have aluminium ventilators with a provision for an exhaust fan.



### WATER SUPPLY:

Water supply will be from a borewell.



### ELEVATORS & STAIRS:

An automatic elevator by a reputed company will be provided. Stairs will be provided with MS railings.



### GENERATOR:

There will be 100% backup power for common areas and backup power of 0.3 KVA for 2 BHK & 0.4 KVA for 3 BHK.



No. 12 - 3 BHK



No. 13 - 3 BHK



Nos. 4,5,6,7 - 2 BHK



No. 8 - 3 BHK



No. 14 - 3 BHK



## EDUCATIONAL INSTITUTIONS NEAR BY

- 3 minutes drive to Indus International School
- 4 minutes drive to New Horizon University
- 8 minutes drive to St. Philomena's English School
- 12 minutes drive to AZIM Premji University
- 10 minutes drive St.Philomena's Public School
- 12 minutes drive Gurukul High - Best CBSE School
- 15 minutes drive BRS Global School
- 16 minutes drive to The Oxford Medical College & Hospital
- 17 minutes drive New Baldwin International School
- 18 minutes drive International School of Management Excellence
- 19 minutes drive Oakridge International School
- 20 minutes drive One World International School - Sarjapura Rd
- 23 minutes drive Green Wood High School
- 22 minutes drive Delhi Public School
- 25 minutes drive NPS- National Public Schoolt



## IT PARKS

- 5 Minutes Drive To Infosys Head Quarter Sarjapura
- 18 Minutes Drive To Wipro Sez Limited
- 20 Minutes Drive To RGA Tech Park
- 30 Minutes Drive To Electronic City
- 25 Minutses To Salarpuria Softzone
- 30 Minutes To RMZ Ecospace Marathahalli
- 35 Minutes To Embassy Tech Village
- 40 Minutes To Prestige Tech Park Kadubesanahalli
- 40 Minutes Drive To ITPL
- 40 Minutes Drive To Sigma Soft Tech Outer Ring Road



## HOSPITALS

- 16 minutes drive To The Oxford Medical college & Hospital
- 10 Minutes Drive To Astha & New Life Hospitals
- 10 Minutes Drive To Confident Multy-Speciality Hospital
- 30 Minutes Drive To Narayana Hrudayalaya Hospital
- 40 Minutes Drive To St: Jhon's Hospital

## Location Advantages of VILARA'S LEGACY

### EDUCATIONAL INSTITUTIONS CLOSE BY:

At just 0.5 km from Indus International School and 1.5 km from Azim Premji University, it's an ideal haven for families valuing education.

### PRIME EMPLOYMENT HUBS:

2.A mere 2 km from Infosys and nearby other prestigious offices, ensuring professionals enjoy a work-life balance.

### EFFICIENT TRANSPORTATION LINKS:

Excellentlly connected by inner and outer ring roads, highways, and abundant public transport, making city navigation a breeze.

### PROXIMITY TO SHOPPING & ENTERTAINMENT:

A multitude of malls, cinemas, and eateries are just around the corner, ensuring entertainment is always on the cards.

### AN OASIS OF CALM:

Positioned in the city's heart, the locale offers a tranquil retreat, perfect for unwinding post a bustling day.

### HEALTHCARE ACCESSIBILITY:

Proximity to renowned hospitals and clinics guarantees prompt medical attention when needed.



## About Vilara Infra

At VILARA INFRA PVT LTD, we recognize that a home transcends beyond walls—it mirrors your dreams and desires. With a rich legacy spanning over 15 years, we have crafted iconic residences in Bangalore and Hyderabad that stand as symbols of our dedication to excellence and punctuality.

Our esteemed directors, backed by vast experience, are industry vanguards renowned for their dedication to quality, ethical standards, and unparalleled client satisfaction. Their leadership has cemented our reputation as trusted trailblazers in real estate.

Our meticulous team ensures each residence we sculpt caters to every nuanced requirement of our clientele, upholding the pinnacle of quality. This unwavering commitment has garnered us an esteemed clientele who vouch for our authenticity.

For us, a home isn't just an architectural marvel—it's a tapestry of memories, a place where laughter resounds, dreams take shape, and life is celebrated in all its hues. We invite you to be a part of our journey in crafting homes that aren't just structures, but legacies.





**Loans Available from Leading Banks**

- SBI**
- HDFC BANK**  
We understand your world
- ICICI Bank**
- IDBI BANK**
- Union Bank of India**
- बैंक ऑफ बड़ौदा Bank of Baroda**



[www.vilarainfra.com](http://www.vilarainfra.com)  
**81233 45666**

Project Address: SY no 22/5 and 22/6, S Medahalli, Sarjapura Hobli, Anekal Taluk, Bangalore - 562125



**Branch Office :**  
 Flat no 402, Imperial Indraprastha Apartment,  
 1<sup>st</sup> Cross, 2<sup>nd</sup> Main, Muneswara Layout,  
 Kodichikkanahalli, Bangalore 560076  
 70133 74125 [vilaralegacy@gmail.com](mailto:vilaralegacy@gmail.com)

**Registered office:**  
 Flat No 308, Magna's Lakeview Apartment,  
 Behind Rantadeep supermarket Khanamet Village,  
 Kondapur, Hyderabad, Telangana 500084  
 85008 60033 [vilarainfra@gmail.com](mailto:vilarainfra@gmail.com)



**H.O:** Vidya Nagar, Hyderabad  
**B.O:** Jubilee Hills, Hyderabad  
 98480 16269  
**B.O:** Horamavu, Bengaluru  
 73535 59202 [info@snsassociates.co.in](mailto:info@snsassociates.co.in)